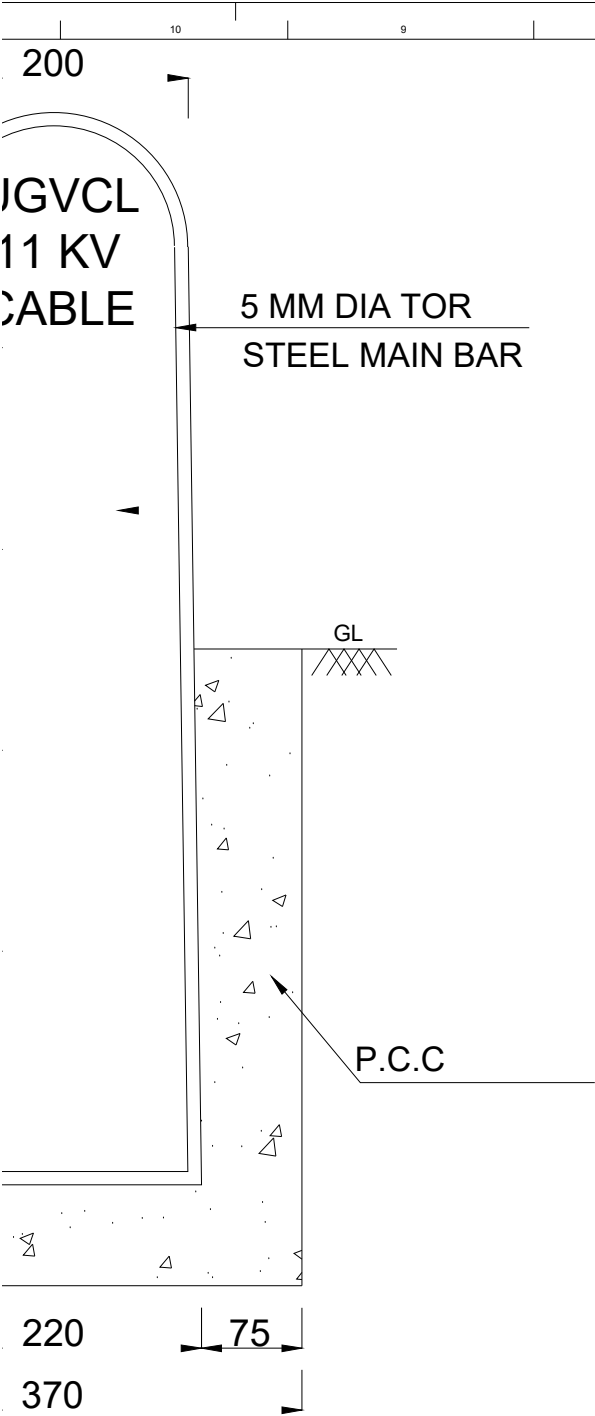


**SINGLE CIRCUIT
CABLE TRENCH**

**DOUBLE CIRCUIT
CABLE TRENCH**

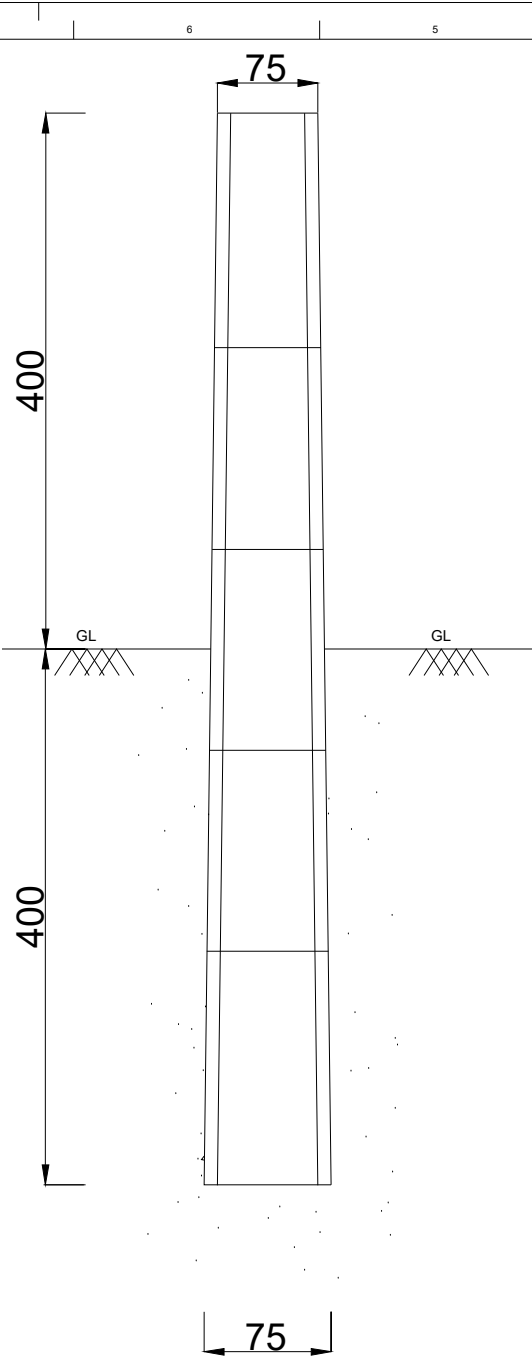


ELEVATION

5 MM MAIN BAR

5 MM DIA LINK
150 C/C


PLAN

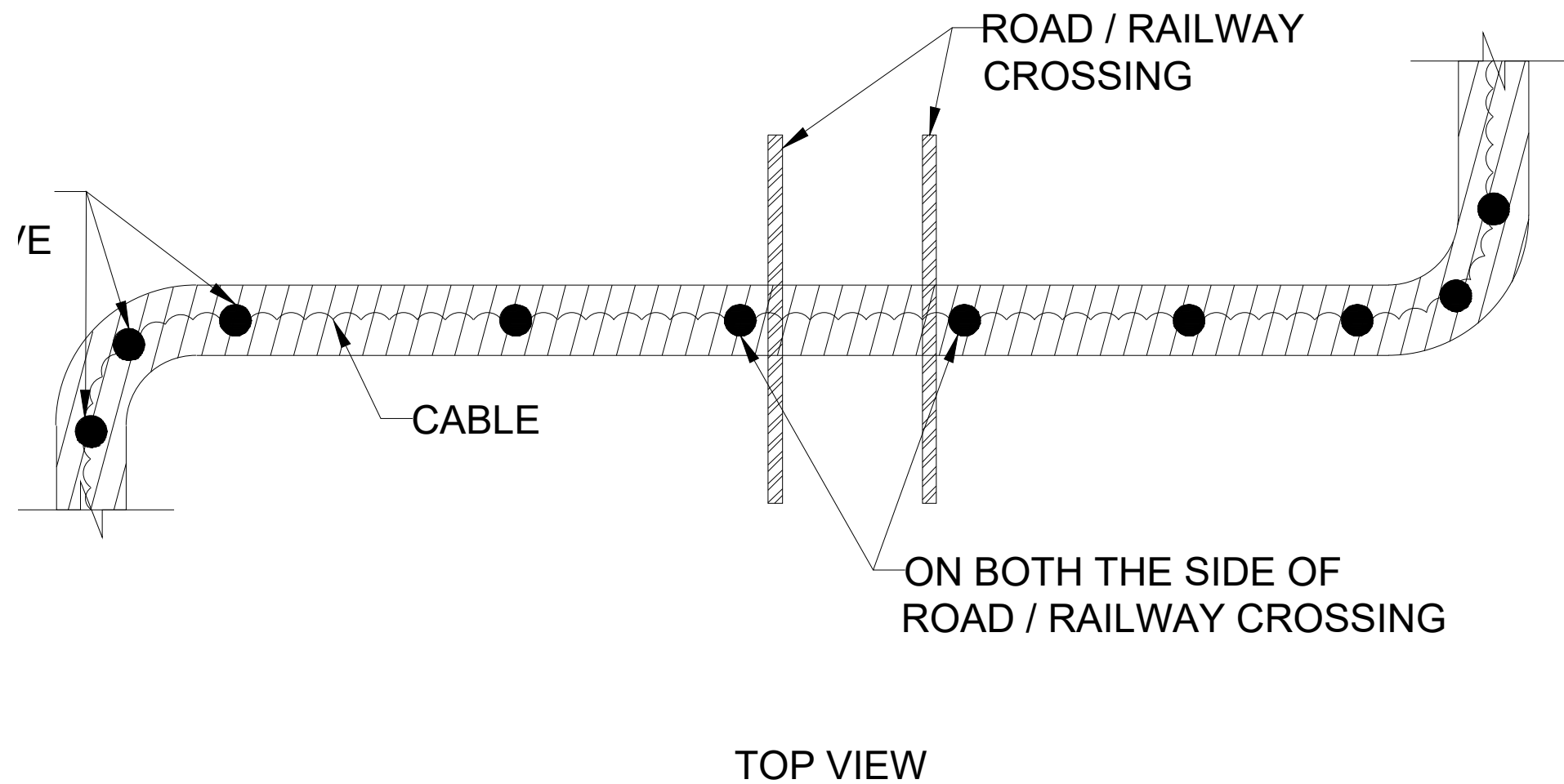


SIDE VIEW

NOTE:—

1) ALL DIMENSIONS ARE IN MM UNLESS OTHERWISE SPECIFIED.

	Uttar Gujarat Vij Company Limited CIN - U40102GJ2003SGC042906 (A subsidiary of Gujarat Urja Vikas Nigam Limited)
	CABLE ROUTE MARKER
SCALE : N.T.S.	
SHEET :	



ALL DIMENSIONS ARE IN MM

LEGEND :

- ~~~~~ : CABLE
- /////// : CABLE TRENCH
- : ROUTE MARKER

ERS ARE TO BE INSTALLED AT EVERY 50 / 100 METERS LENGTH
ECIFICATION, DRAWING AND INSTRUCTION OF ENGINEER - IN
OWEVER, AT CURVE AND ROAD / RAILWAY CROSSING ROUTE
RS ARE TO BE INSTALLED AS ABOVE AND SITE SITUATION.



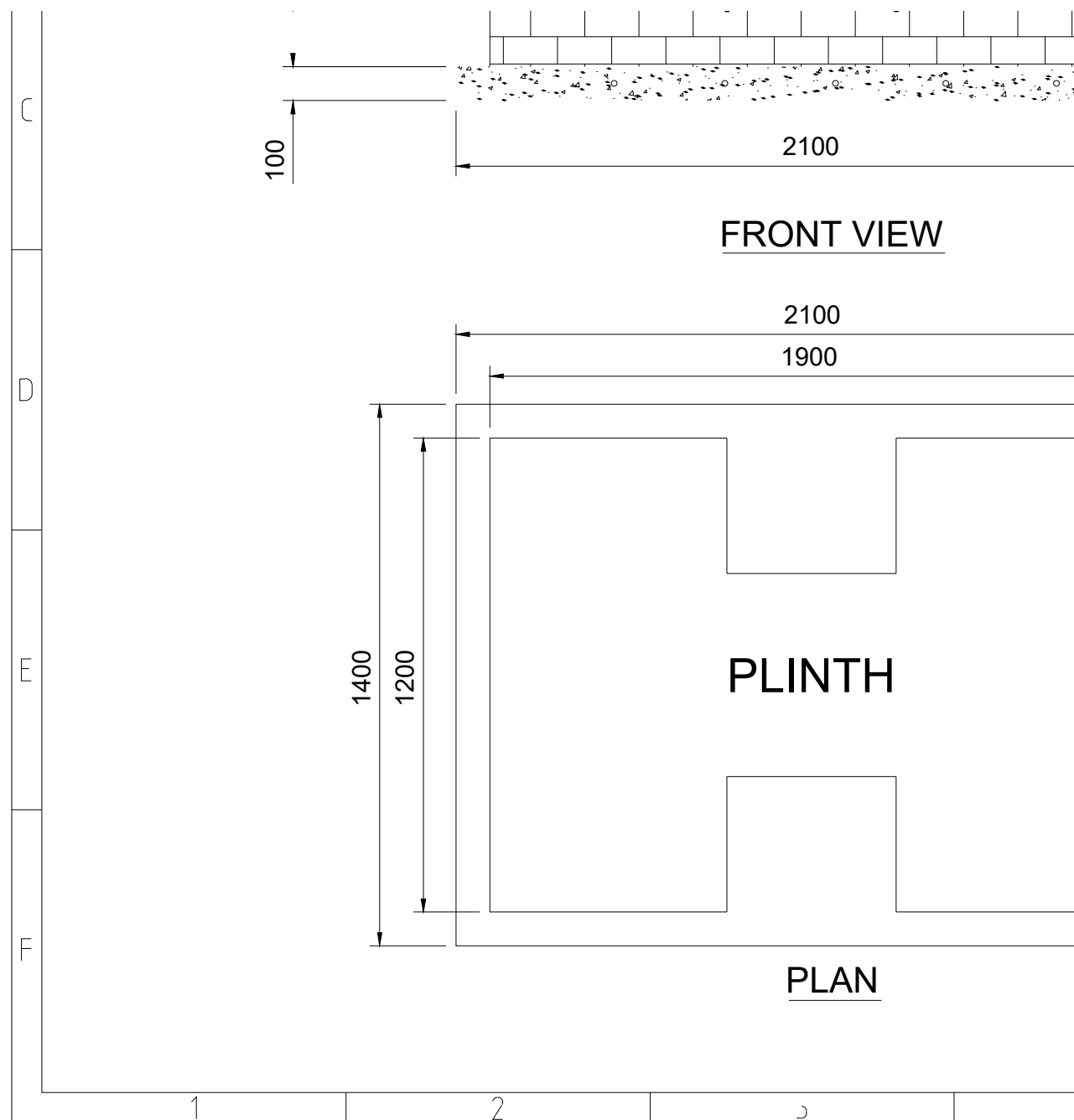
Uttar Gujarat Vij Company Limited

CIN - U40102GJ2003SGC042906
(A subsidiary of Gujarat Urja Vikas Nigam Limited)

ROUTE MARKER INSTALLATION

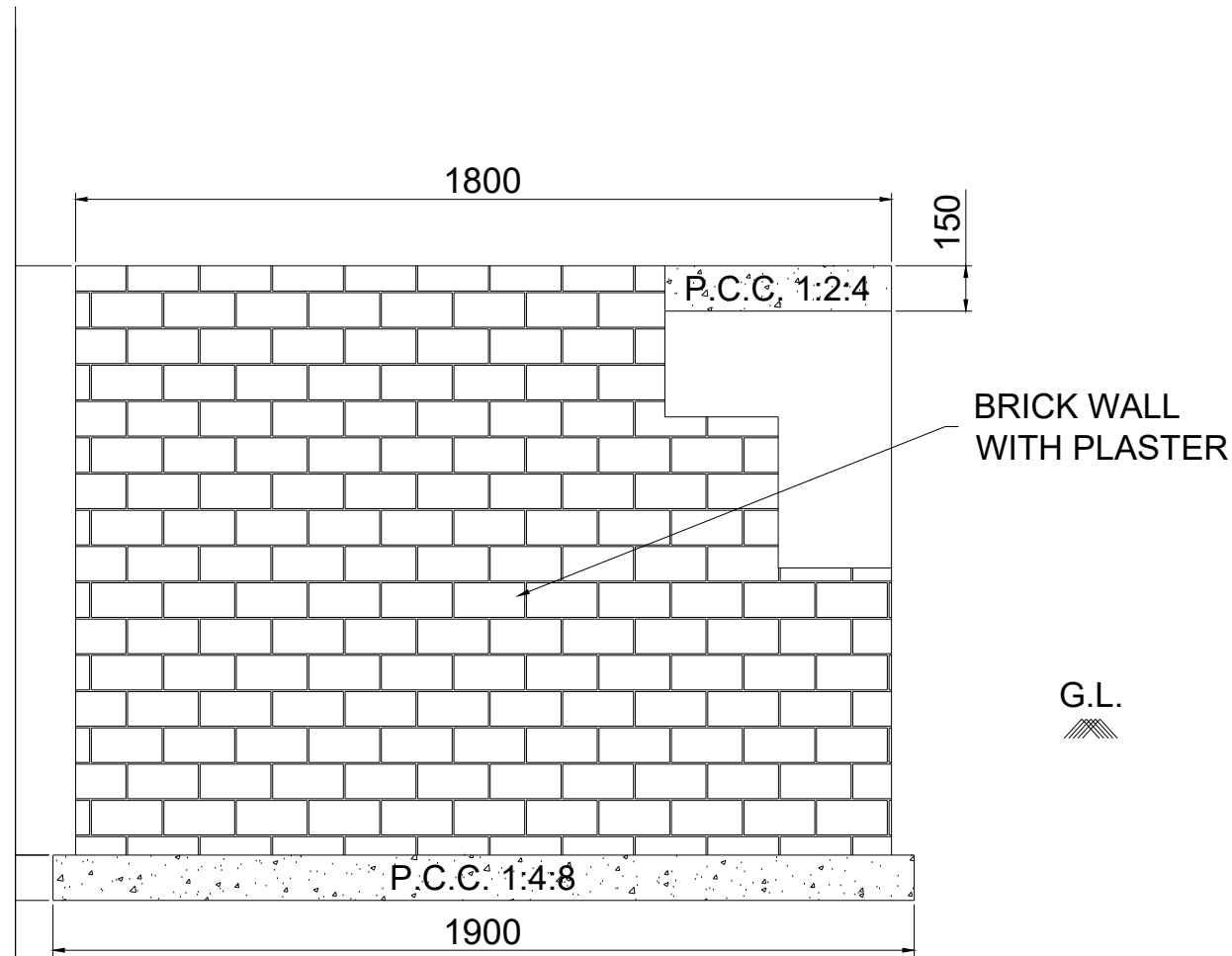
SCALE : N.T.S.

SHEET :

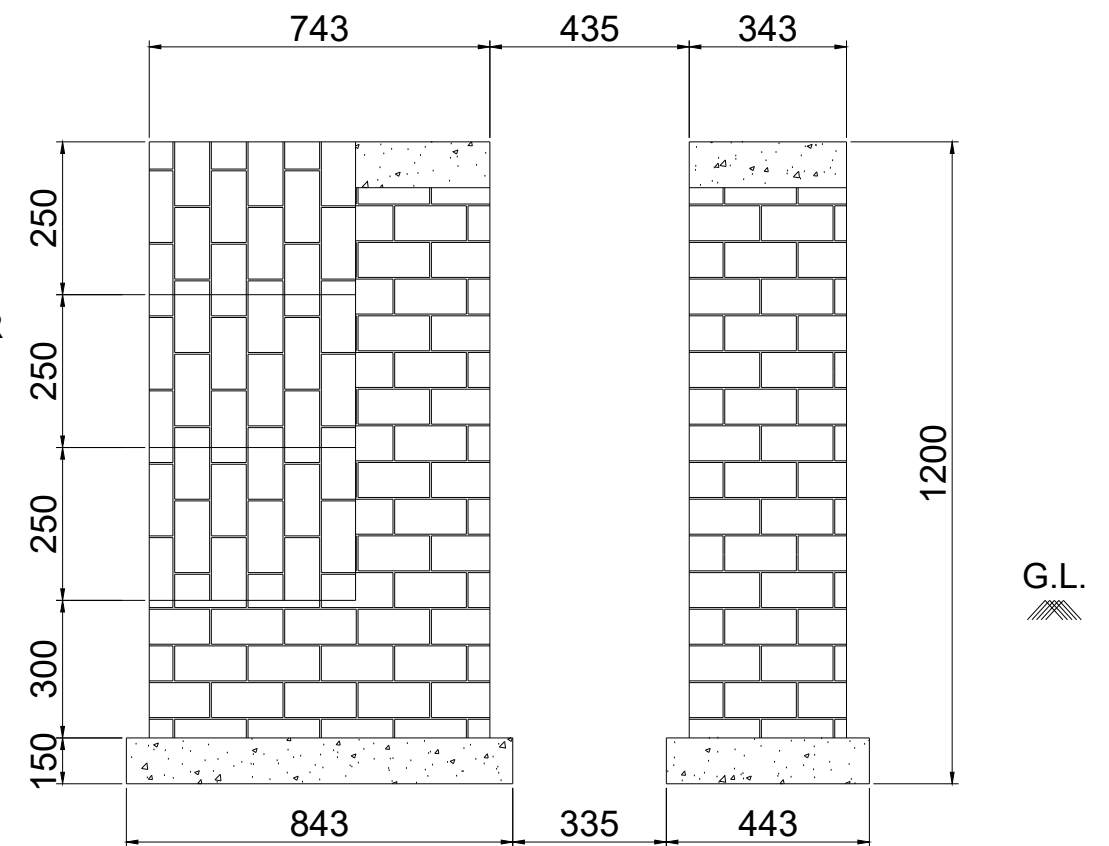


Uttar Gujarat Vij Company Limited

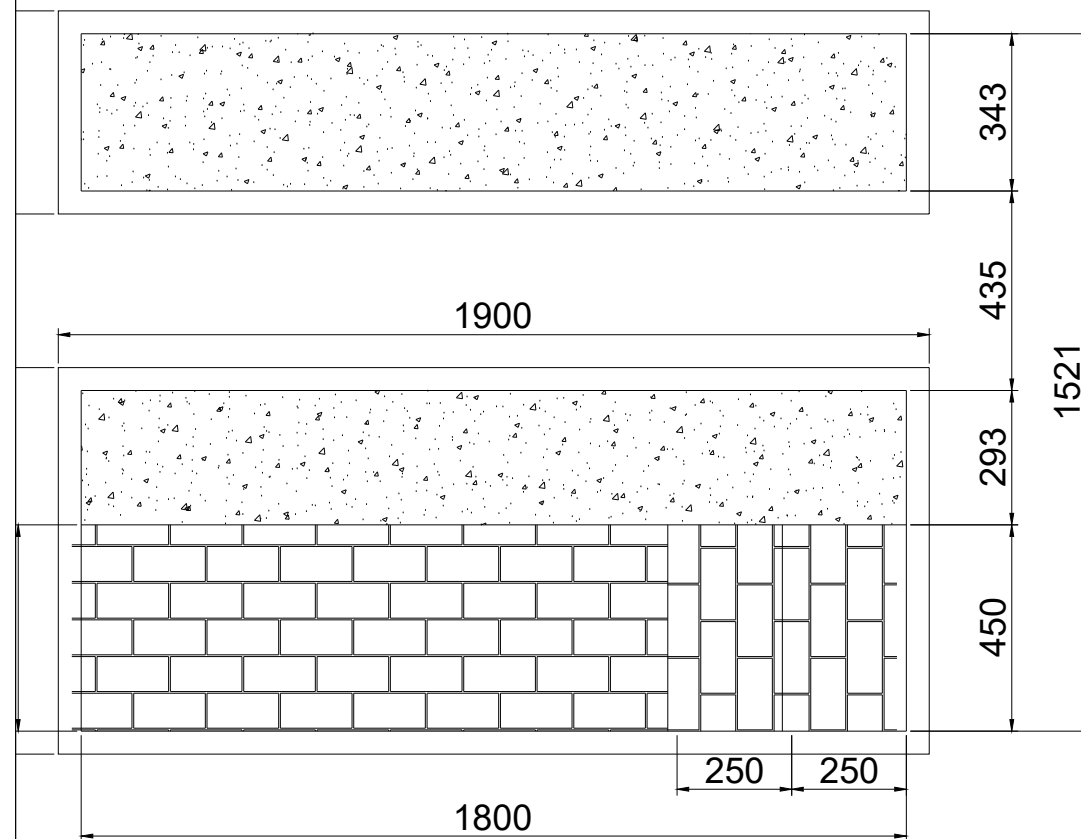
CIN - U40102GJ2003SGC042906
(A subsidiary of Gujarat Urja Vikas Nigam Limited)



ELEVATION



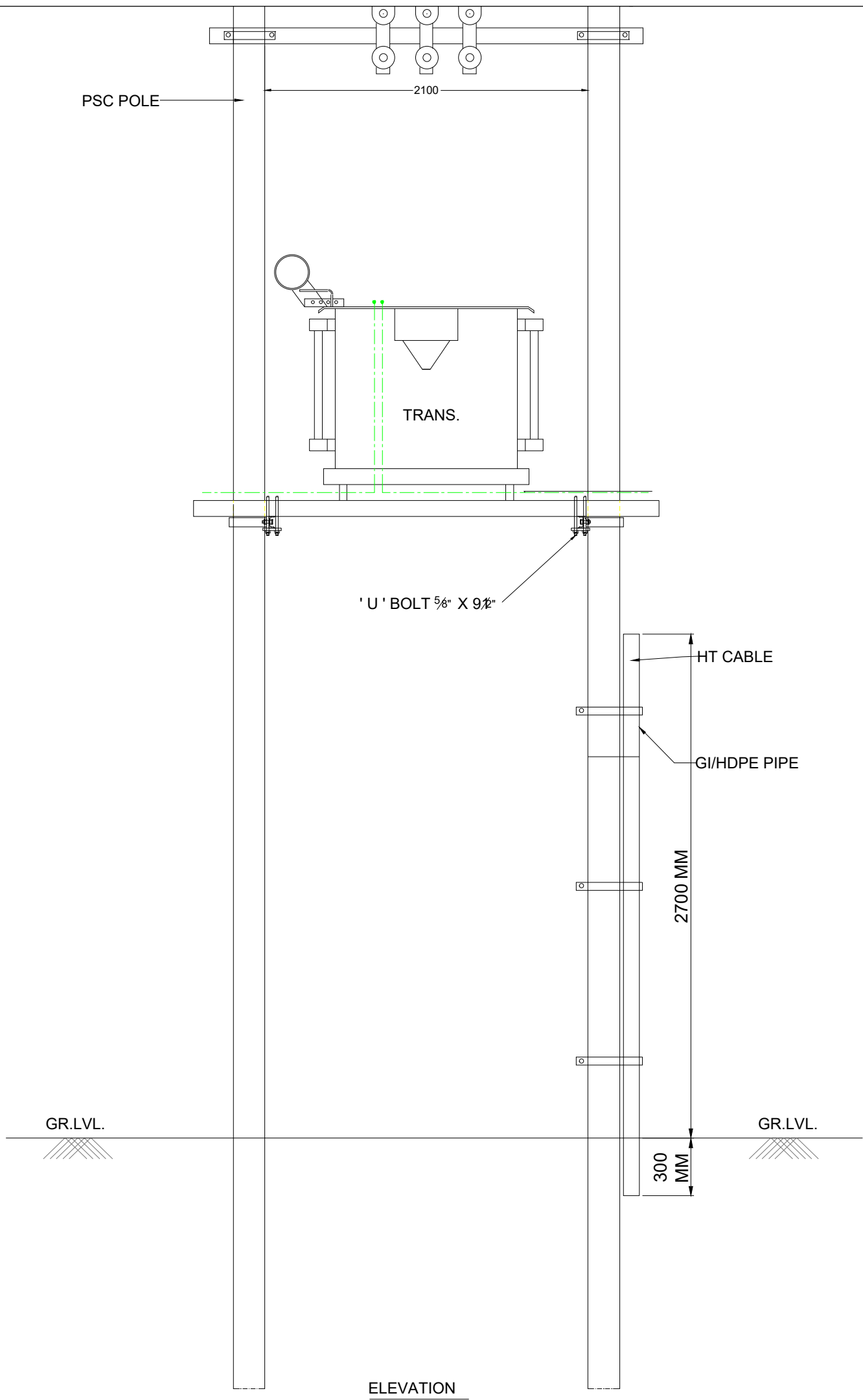
SIDE VIEW



PLAN

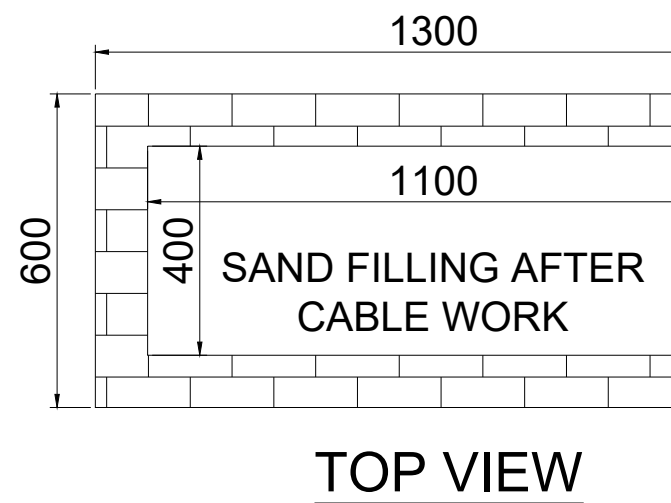
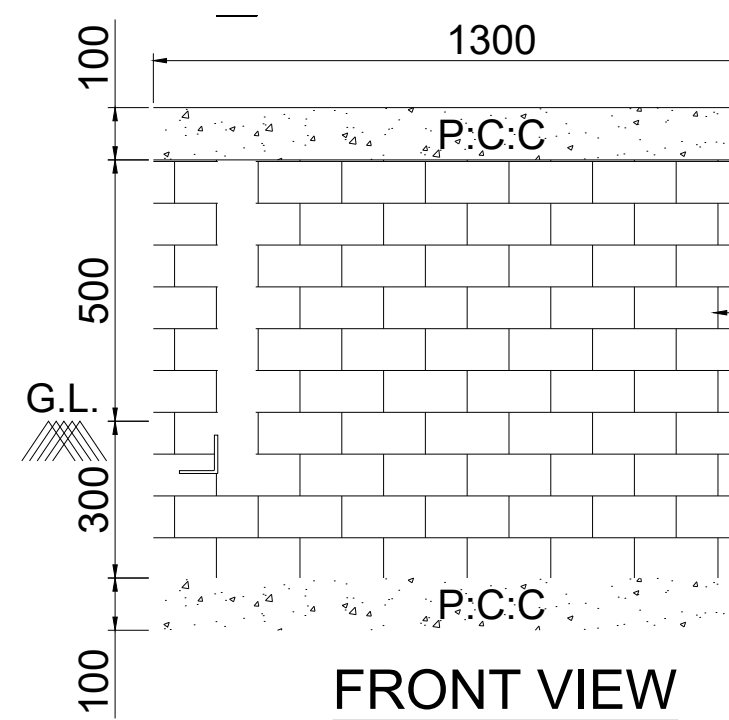
NOTE : COMMON PLINTH DRAWING IS FOR ALL THE CAPACITY OF RMU.
HOWEVER, WIDTH OF PLINTH MAY VARY FOR EACH CAPACITY OF RMU
AS PER DESIGN OF RMU OF OEM.

	Uttar Gujarat Vij Company Limited CIN - U40102GJ2003SGC042906 (A subsidiary of Gujarat Urja Vikas Nigam Limited)
	2,3,4 & 5 WAY RMU PLINTH
SCALE : N.T.S.	
SHEET :	



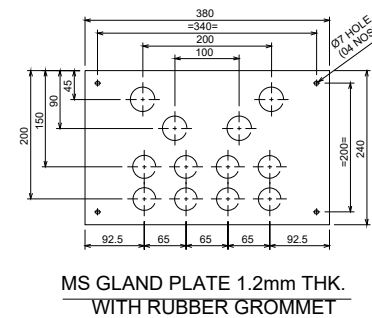
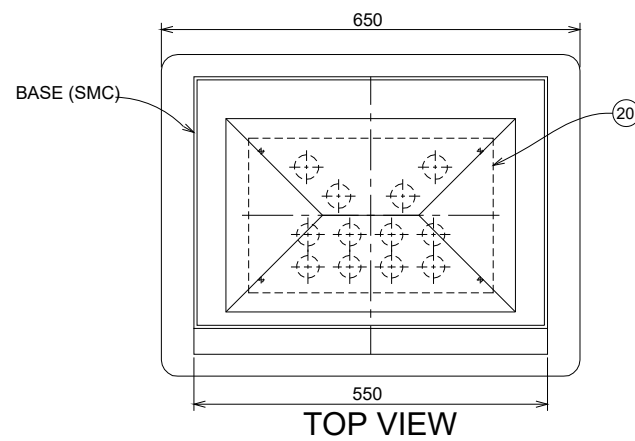
ALL DIMENSIONS ARE IN MM

	Uttar Gujarat Vij Company Limited <small>CIN - U40102GJ2003SGC042906 (A subsidiary of Gujarat Urja Vikas Nigam Limited)</small>
	DOUBLE POLE STRUCTURE



Uttar Gujarat Vij Company Limited

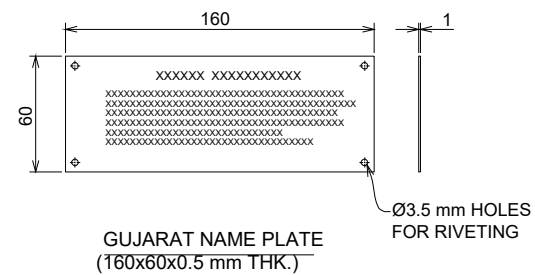
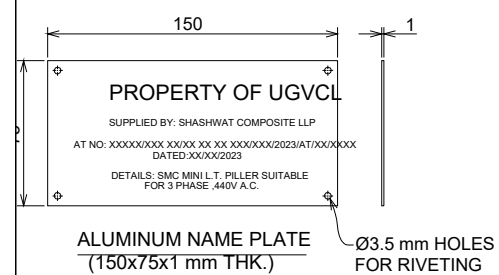
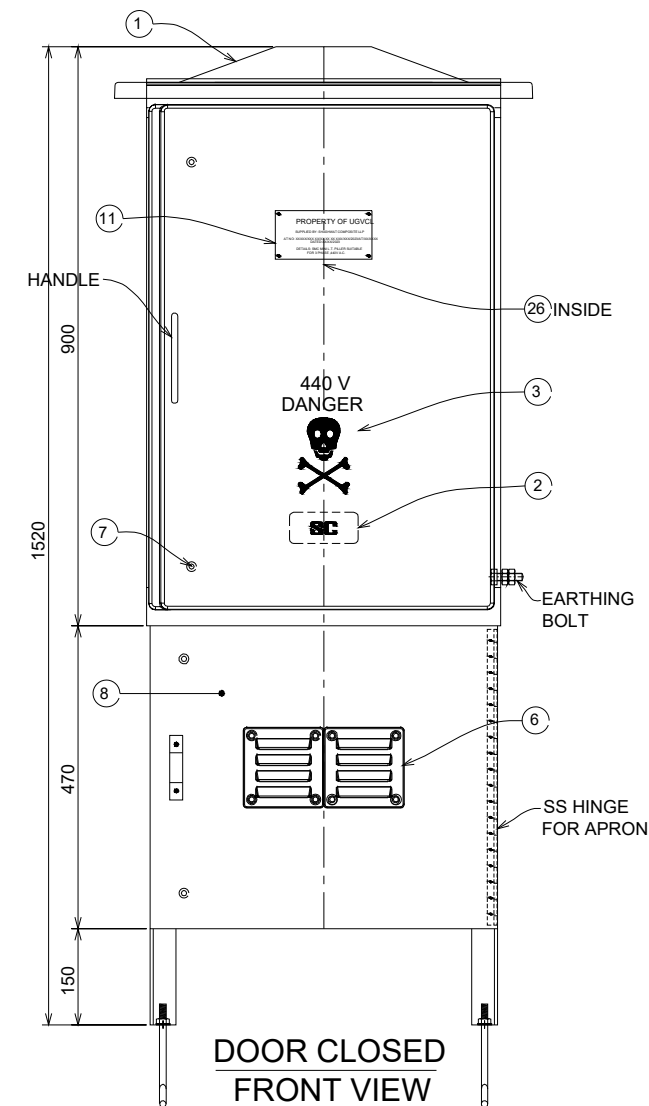
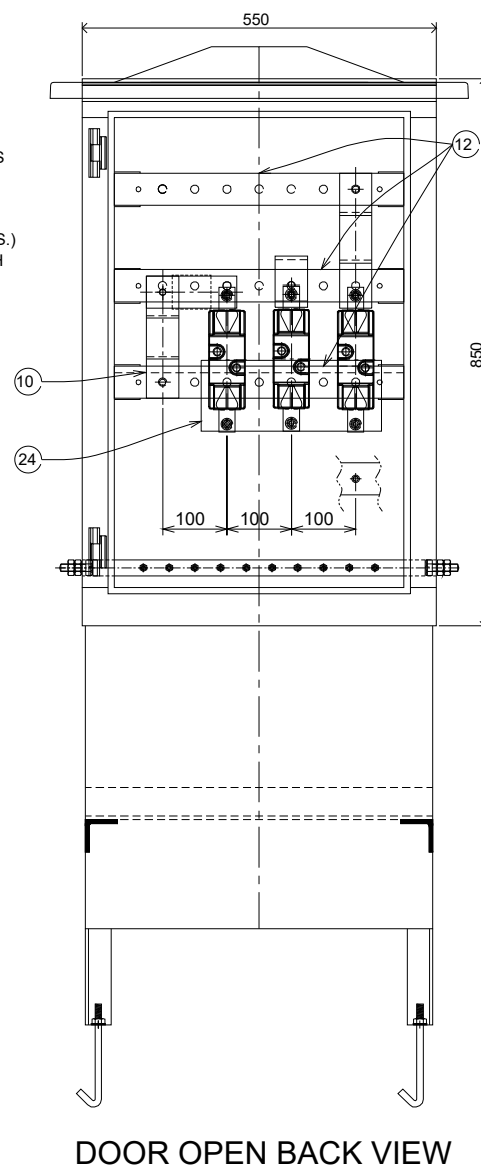
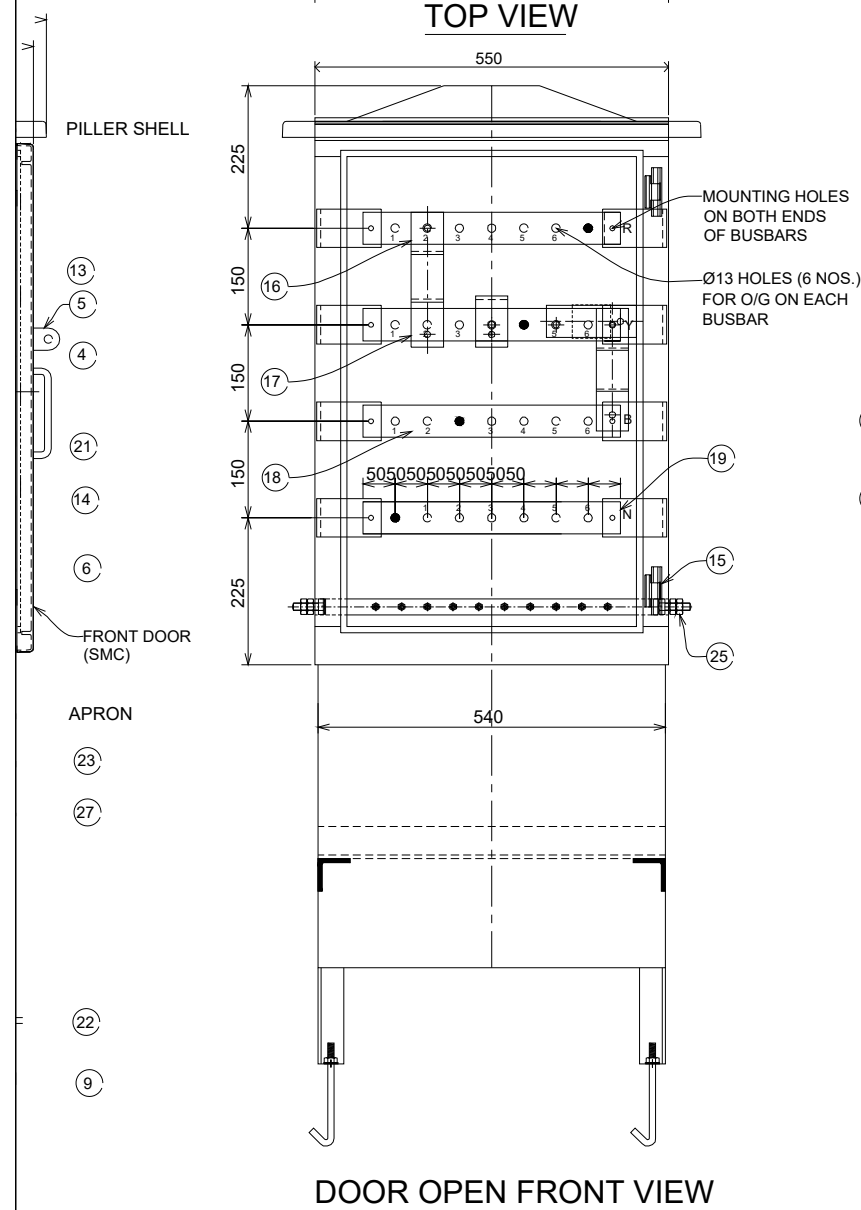
CIN - U40102GJ2003SGC042906
(A subsidiary of Gujarat Urja Vikas Nigam Limited)



DETAILS OF
I/C-O/G CABLE ENTRY-EXIT
HOLE ARRANGEMENT
A=Ø35, 4 NOS.
B= Ø35, 4 NOS.
C=Ø38, 4 NOS.
Ø7mm HOLE FOR GLAND
PLATE FIXING

NOTES :-

- (1) ALL BOLTS, NUTS TO BE PROVIDED WITH PLAIN WASHER OF SUITABLE SIZE.
- (2) PILLAR SHELL SHALL BE MOULDED OF SMC & APRON FRAME WORK SHALL BE FABRICATED USING FRP PULTRUDED SECTIONS & SMC SHEET.
- (3) COLOUR OF PILLER BOX SHALL BE GREY & THAT OF APRON SHALL BE BLACK/YELLOW.
- (4) SIZE OF BOX : 850x550x400 mm (MINIMUM INSIDE)
WALL THICKNESS : 3.15 mm



TOLERANCE TABLE	
RANGE	UNSPECIFIED TOLERANCE
> 0 < 50	± 1.0
> 50 < 200	± 3.0
> 200 < 300	± 5.0
> 300 < 400	± 10.0
ABOVE 400	± 20.0
THICKNESS OF BOX/LID	± 0.25



Uttar Gujarat Vij Company Limited

CIN - U40102GJ2003SGC042906
(A subsidiary of Gujarat Urja Vikas Nigam Limited)

SMC LT MINI SECTION PILLAR BOX SUITABLE
FOR 3 PH 50 C/S 440 V AC

SCALE : N.T.S.

SHEET :

LEGEND

DESCRIPTION

ROOF TOP TO BE BOLTED IN SUCH WAY THAT DOORS CANNOT BE REMOVE

TURER'S NAME ON THE DOOR (EMBOSSED/PRINTED)

YMBOL

500X60X10mm FOR FUSE MOUNTING

NG WITH Ø16mm HOLE.

ILATION LOUVERS WITH STAINLESS STEEL WIRE MESH INSIDE (2 NOS ON EACH DOOR AND 2 NOS ON APRON FRONT = TOTAL 06 NOS)

PE LOCKING DEVICE ON FRONT AND BACK DOOR - 2 NOS. EACH WITH KEY

BOTTOM COVERS OF 3mm SMC SHEET. THE FRONT COVER FIXED BY HEAVY DUTY SS HINGES EACH COVERS HAVING SMC LOUVERS WITH STAINLESS STEEL MESH
 LTED ARRANGEMENT PROVIDING FOR FIXING BOTH SIDE COVERS

HOLES Ø11mm SUITABLE FOR Ø10mm J-TYPE FOUNDATION BOLTS

BASE WITH 200A FUSE LINK FOR 100 KVA & 315A FOR 200 KVA

E PRINTING ALLU. NAME PLATE 150X75X1 mm ON BOTH DOOR.

UPPER BUS BAR FOR INCOMING SUPPLY SIZE 50x6mm OF SUITABLE LENGTH FOR R,Y, B PHASE

RUDED ANGLE FOR BUSBAR FIXING 75X60X10 mm

BASE FOR MOUNTING BUS BARS BRACKET

\$ FOR EACH DOOR NON DETACHABLE TYPE (2 NOS EACH DOOR)

ALUMINUM BUS BAR FOR OUTGOING SUPPLY SIZE 50x10mm AND 425mm LONG FOR 'R' PHASE

ALUMINUM BUS BAR FOR OUTGOING SUPPLY SIZE 50x10mm AND 425mm LONG FOR 'Y' PHASE

ALUMINUM BUS BAR FOR OUTGOING SUPPLY SIZE 50x10mm AND 425mm LONG FOR 'B' PHASE

ALUMINUM BUS BAR FOR OUTGOING SUPPLY SIZE 50x10mm AND 425mm LONG FOR NEUTRAL

ATE OF 1.2 mm THK. M.S. SHEET WITH HOLE AND GROMMET

'C' BRACKET) FOR MOUNTING BUS BARS SMC STRIP OF 3mm THICK

h THICK (MINIMUM) SMC ANGLE FRAME FOR PADESTAL ONLY WITH J-TYPE MS/GI FOUNDATION BOLT

COVER OF 3mm SMC SHEET FIXED TO BOTH SIDE

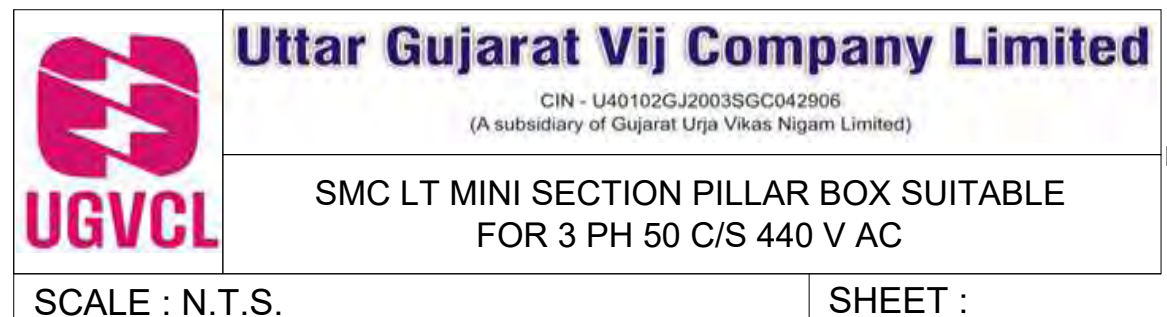
T FOR PARTITION 280X110X3mm

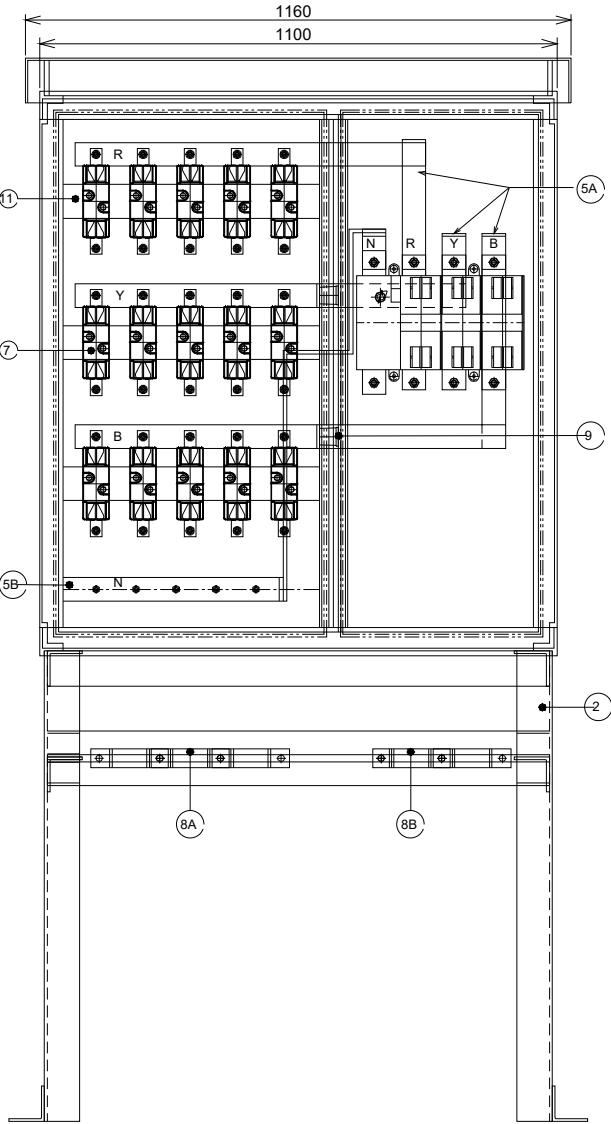
NG BOLT M12X20mm WITH 2 NUT, 2 WASHER & 1 SPRING WASHER FITTED WITH ALLU. EARTHING STRIP 25X3mm THK. WHICH HAVING M6X25mm BOLT - 10 NOS

11E PLATE IN GUJARATI - INSIDE THE DOOR 160X60X0.5 mm

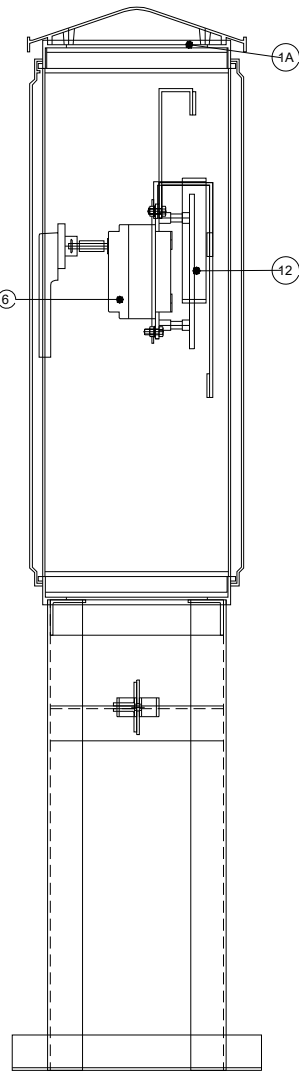
10X6mm 500mm WITH HOLES FOR CABLE HOLDING CLAMP FITTING.

TOLERANCE TABLE	
RANGE	UNSPECIFIED TOLERANCE
> 0 < 50	± 1.0
> 50 < 200	± 3.0
> 200 < 300	± 5.0
> 300 < 400	± 10.0
ABOVE 400	± 20.0
THICKNESS OF BOX/LID	± 0.25

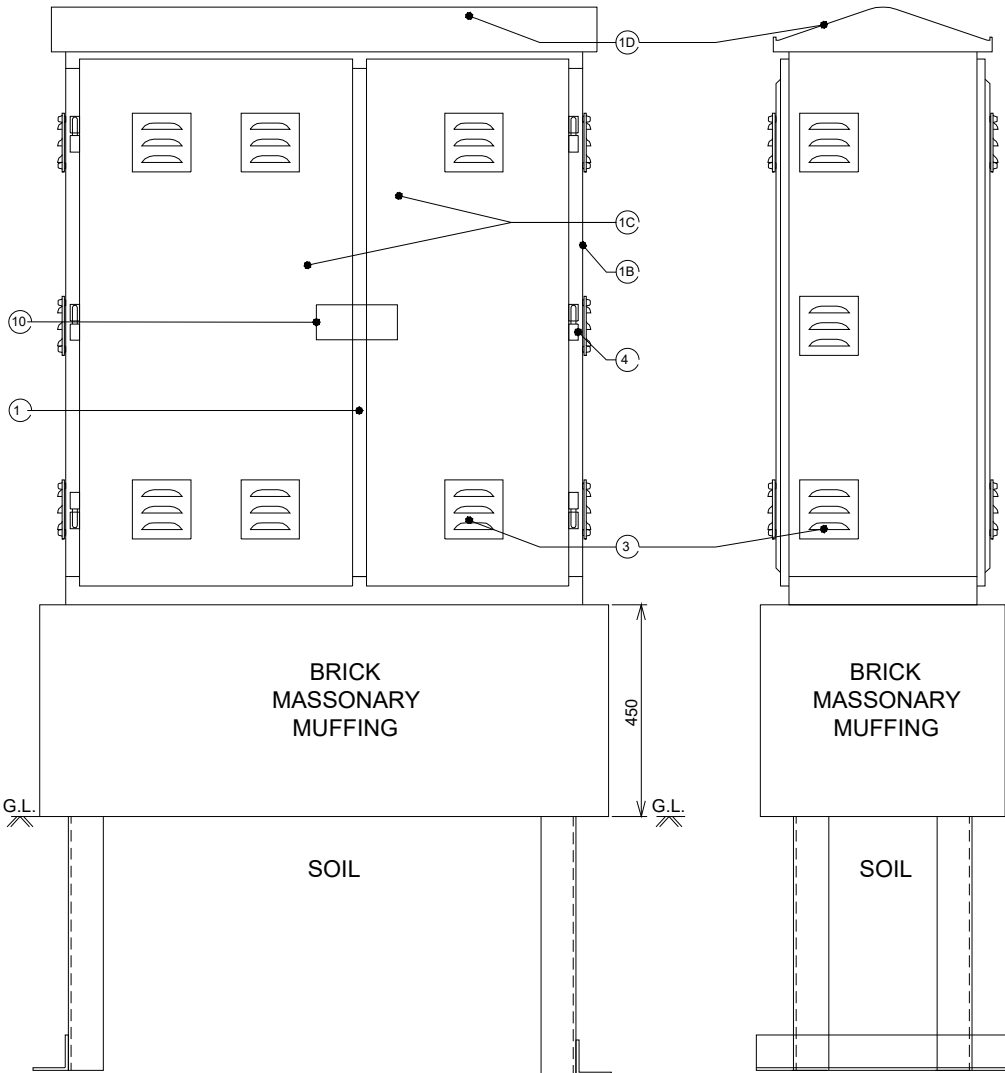




DOOR OPEN VIEW




R.H. SIDE VIEW
(SIDE PANEL REMOVED)



FRONT VIEW

R.H. SIDE VIEW

		SIZE / RATING	QUANTITY
MADE OUT OF STIC. THICKNESS 4 mm.		1200 X 1100 X 400 mm	1 NO
EACH			
GLASS REINFORCED THERMOSETTING PLASTIC.		1000 mm HEIGHT	1 NO
		AS SHOWN IN DRAWING	-
		AS PER MFG. DESIGN	-
INSULATED	A. PHASE (R,Y,B)	63 X 10 mm	-
	B. NEUTRAL	63 X 10 mm	-
RATED/EQUIVALENT DGVC APPROVED		800 A	1 NO
CABLES		150A	15 NOS
CABLE SLOT	O/G 31/2 CORE CABLE	40X5X165, R42 mm	5 NOS
	I/C 1 CORE CABLE X 4	375X65X45 mm	1 NO
		-	8 NOS (MIN.)
BACK)		-	2 NOS
Ø11 @ 30X25 C/C, 70 mm C/C (MIN.) INTERVAL		-	3 NOS
		-	1 NO

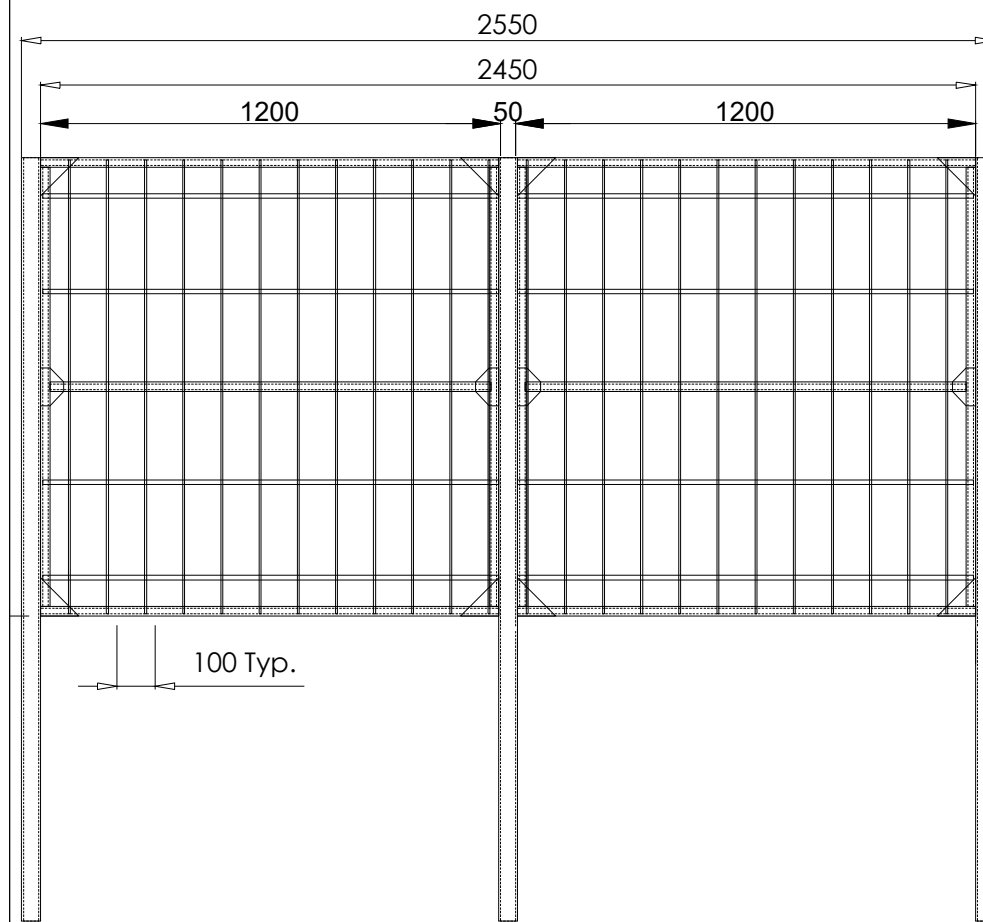


Uttar Gujarat Vij Company Limited
CIN - U40102GJ2003SGC042906
(A subsidiary of Gujarat Urja Vikas Nigam Limited)

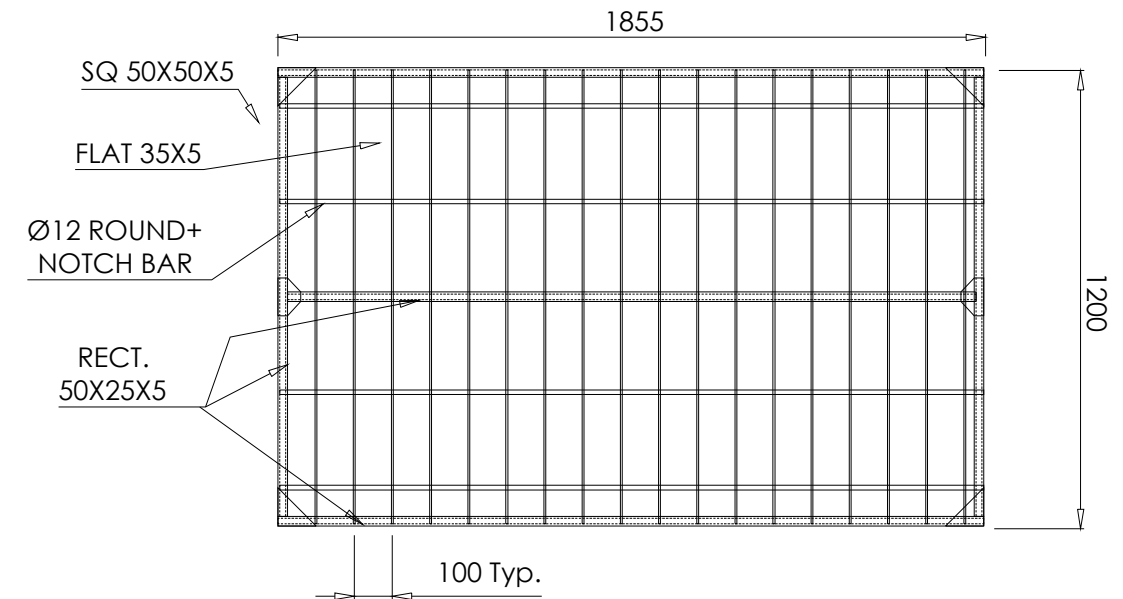
FRP PILLAR BOX (1200X1100X400MM)

SCALE : N.T.S.

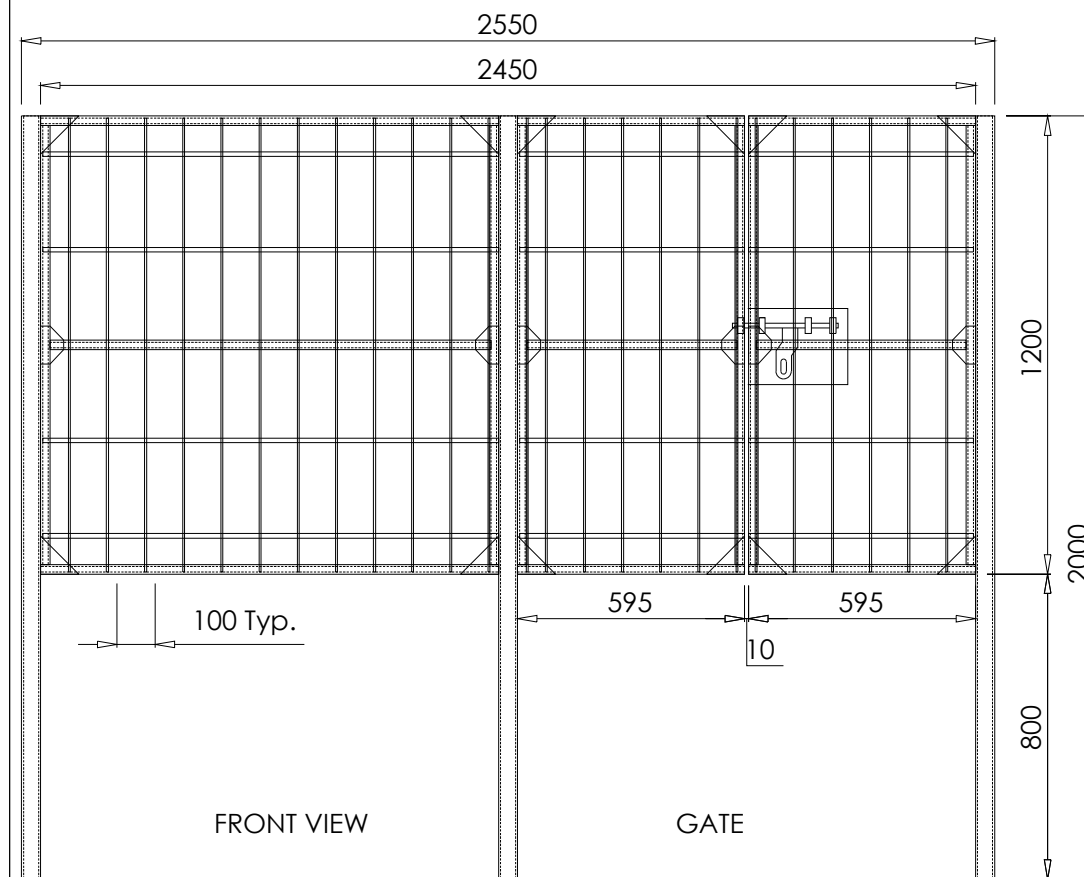
SHEET :



BACK SIDE VIEW

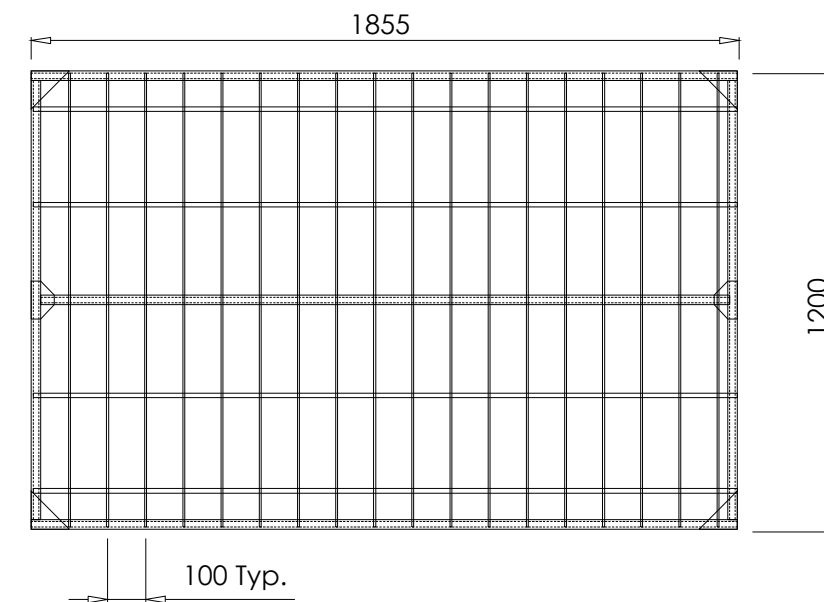


L.H. SIDE VIEW



FRONT VIEW

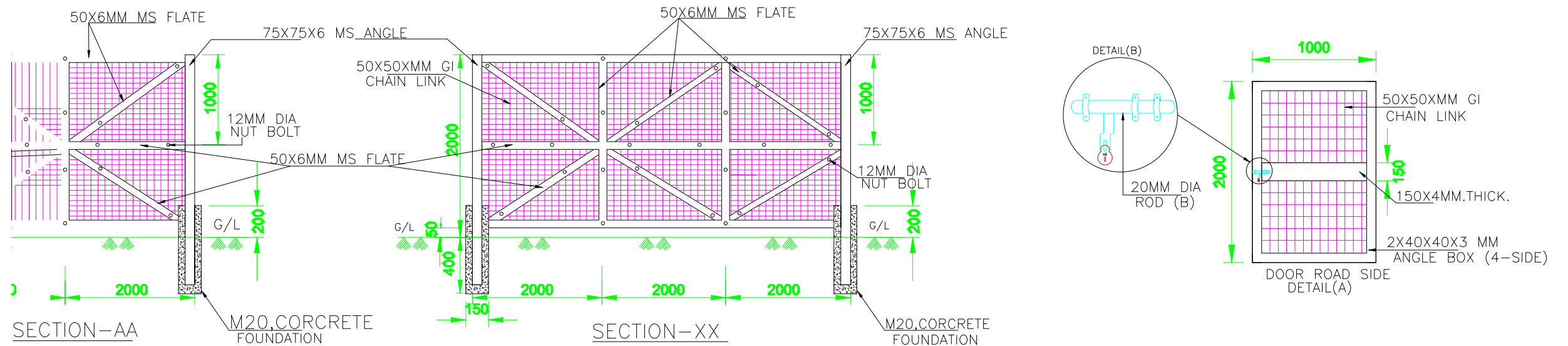
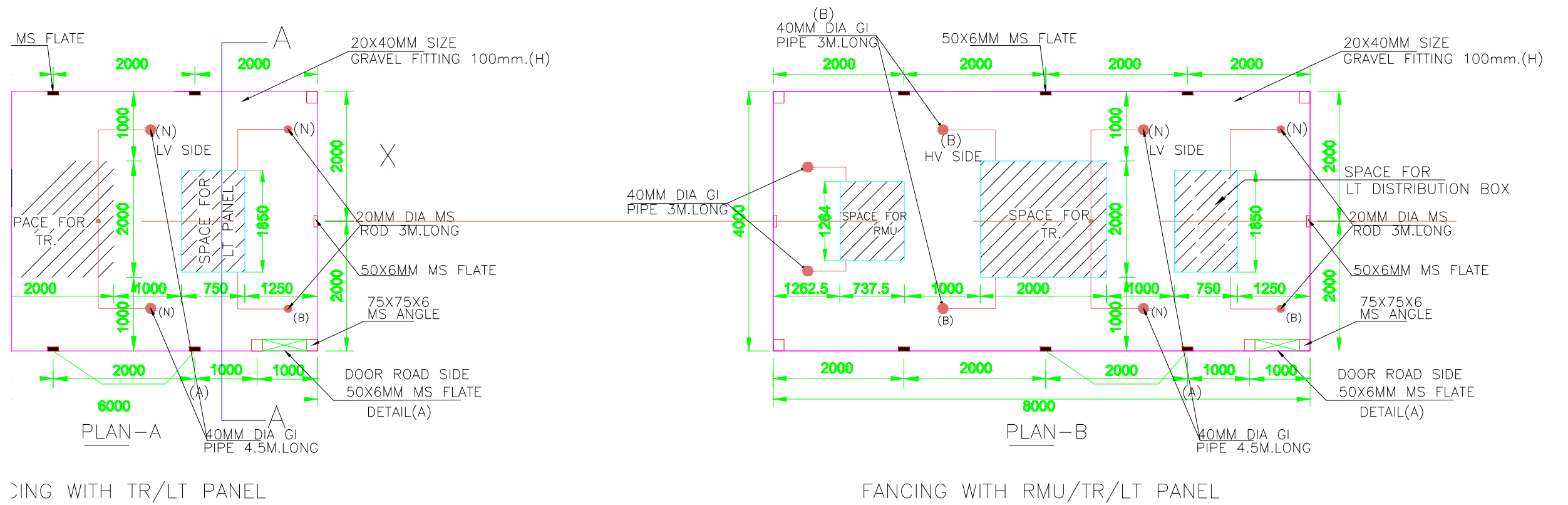
GATE



R.H. SIDE VIEW

NOTE:

1. ALL DIMENSIONS ARE IN MM UNLESS OTHERWISE SPECIFIED.
2. COMMON FENCING DRAWING FOR ALL TYPES OF RMU AND DP STRUCTURE. HOWEVER, HEIGHT MAY BE VARY AS PER DESIGN OF RMU AS PER OEM AND AS PER SITE SITUATION OF DP STRUCTURE.



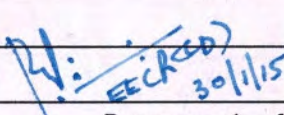
TYPICAL FENCING DETAILS

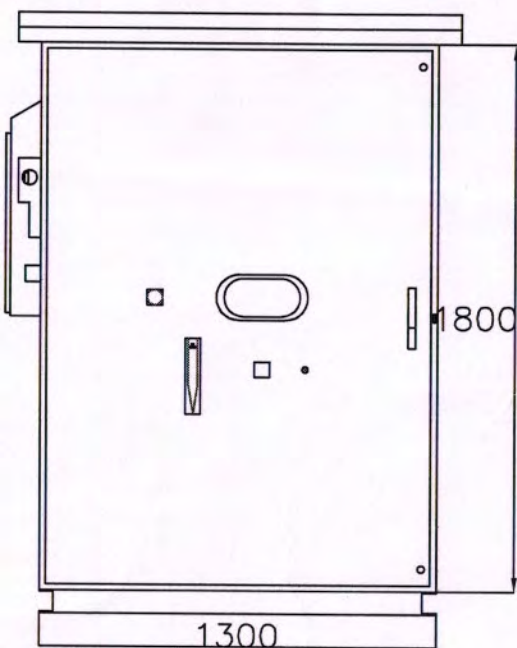
	Uttar Gujarat Vij Company Limited CIN - U40102GJ2003SGC042906 (A subsidiary of Gujarat Urja Vikas Nigam Limited)	
	TYPICAL DRAWING FOR EQUIPMENT CHAINLINK FENCING & FOUNDATION DETAIL	
SCALE : N.T.S.		SHEET :

GENERAL NOTES:-

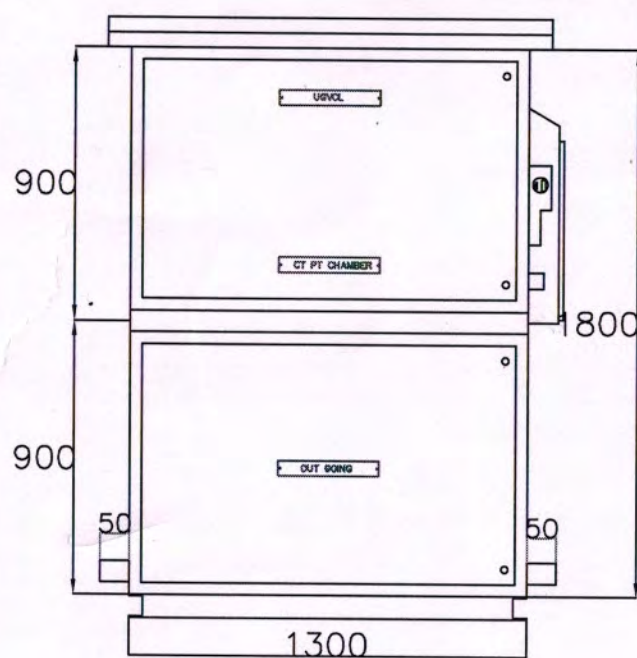
1. ALL DIMENSIONS ARE IN MM.
2. BUS BAR SIZE: – 50 X 10 MM ALU.
EARTH BUS BAR SIZE: – 40 X 10 MM ALU.
3. EARTHING WIRES SIZE: 2.5 SQ.MM.
4. PAINT: SIEMENS GRAY / STRUCTURE BLUE POWDER COATING (RAL 7035 /RAL 5012)
5. MIN. CLEARANCE BETWEEN PHASE – PHASE & PHASE – EARTH ARE 120 MM.
6. BUS BAR SUPPORT / INSULATOR – EPOXY.
7. BUS BAR ARE HEAT SHRINKABLE 11KV GRADE
SYNTETIC SLEEVE.
8. DEGREE OF PROTECTION: IP 55.
9. SHEET STEEL THICKNESS: 14 SWG CRCA.

3P4W, -/110V/rt3 (5A), Electronic Trivecto meter, SMB, TTB. (to be supplied by UGVCL)	1	No.	Supplied by UGVCL
11KV / rt3/110V/rt3 cl. 0.2, Potential transformer, - /5A, cl 0.5, Current transformer (Combined CTPT unit) To be supplied by UGVCL	1	No.	Supplied by UGVCL
Main Busbar 50 x 10 mm, Alu EC grade	1	lot	Reputed
HT fuses / HRC fuses	3	No.	Reputed
Load break switch/ VCB 11 KV, 630A, 3P, 26.3KA, For 03 sec with Earth switch	1	set	Reputed
Earth busbar - 25 x 6 mm Alu. EC grade	1	set	Reputed
Mesh guard	1	set	Fabricated
Busbar support (insulator)	9	No.	Reputed

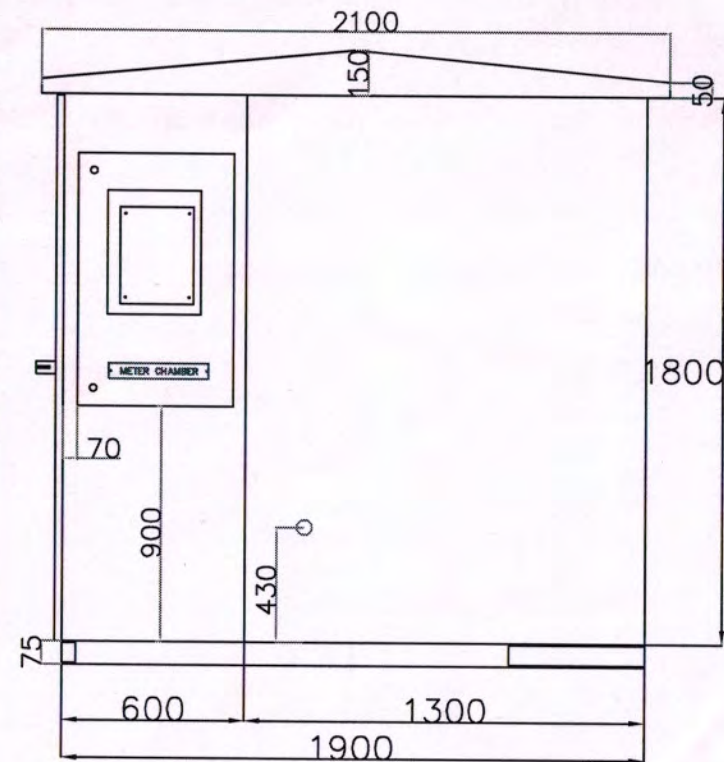
UTTAR GUJARAT VIJ COMPANY LIMITED	
HT Metering Cubicle (HTMC)	
Drg No. UGVCL/R&D-PP/HTMC/001/R1	
Checked by	
Approved by	
Page no. 1 of 3	



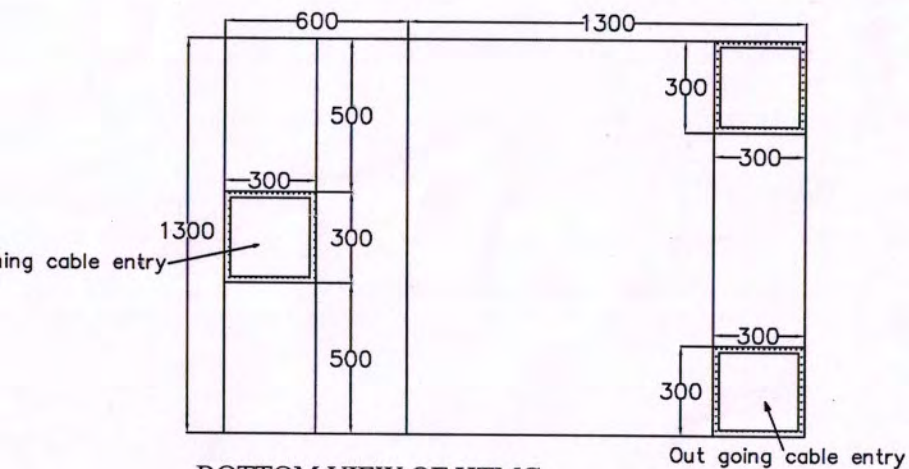
FRONT VIEW



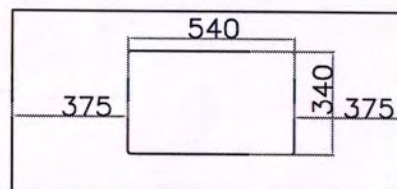
REAR VIEW



SIDE VIEW

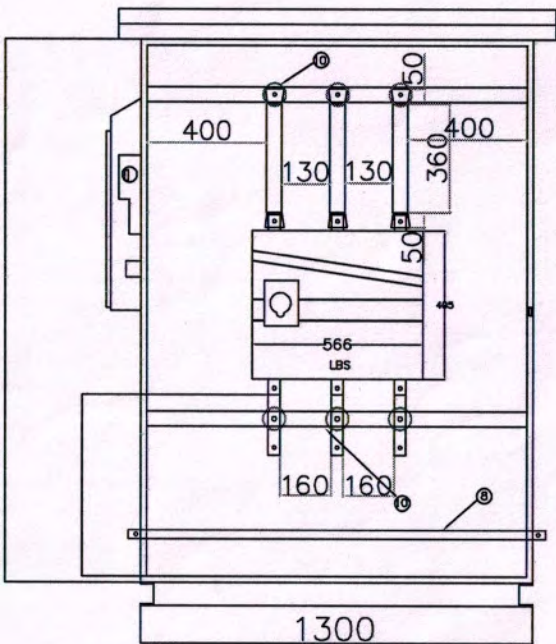


BOTTOM VIEW OF HTMC

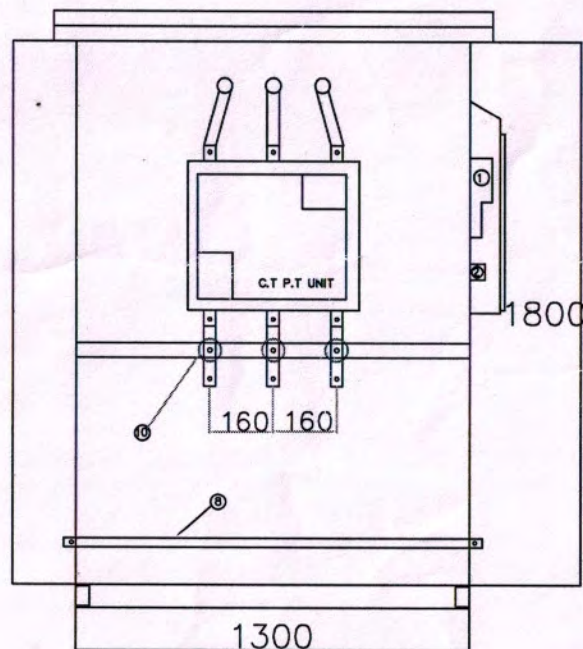


UTTAR GUJARAT VIJ COMPANY LIMITED	
HT Metering Cubicle (HTMC)	
Drg No. UGVCL/R&D-PP/HTMC/001/R1	
Checked by	
Approved by	
Page no. 2 of 3	

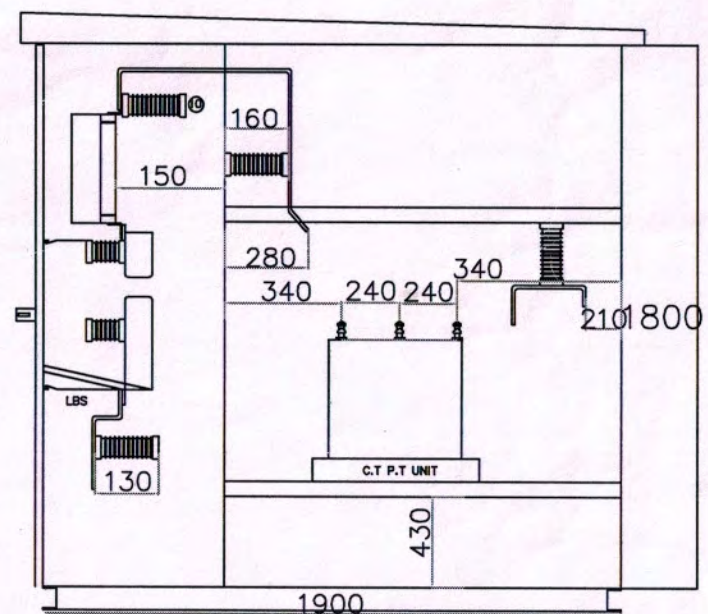
EEC (R&D)
30/1/15



FRONT VIEW DOOR OPENED



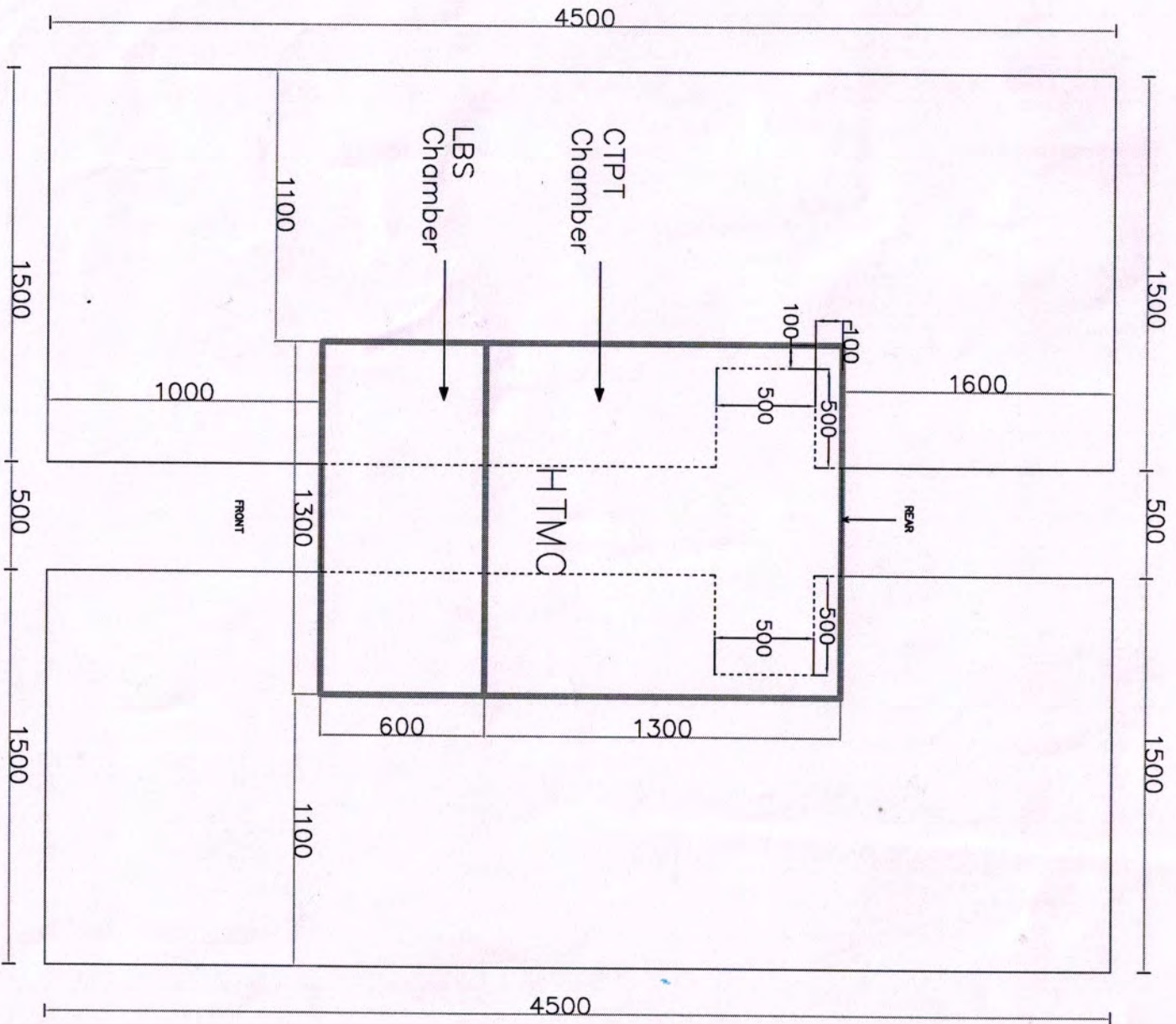
REAR VIEW DOOR OPENED



SECTIONAL SIDE VIEW

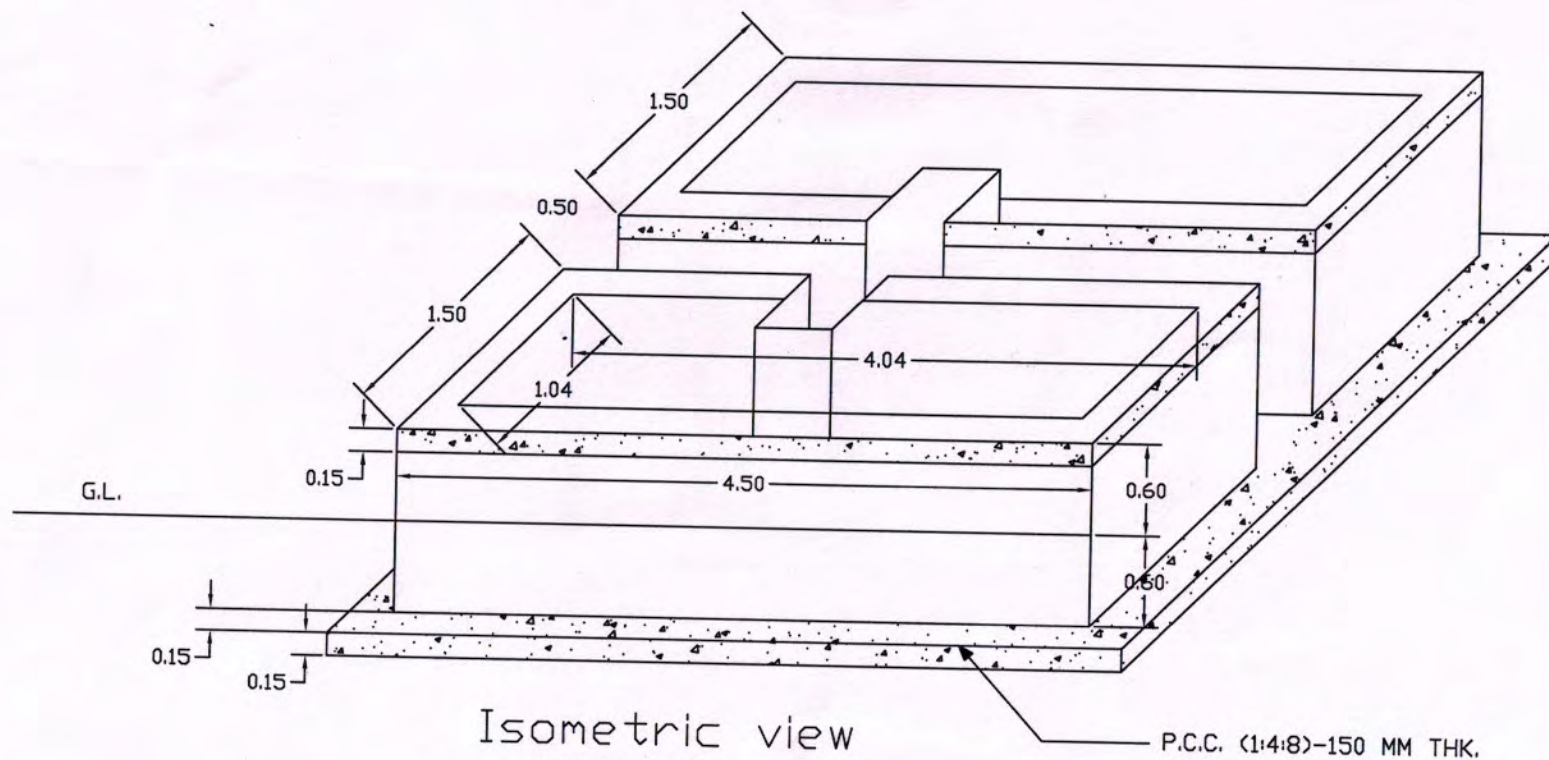
130 75

UTTAR GUJARAT VIJ COMPANY LIMITED	
HT Metering Cubicle (HTMC)	
Drg No. UGVCL/R&D-PP/HTMC/001/R1	
Checked by	
Approved by	
Page no. 3 of 3	

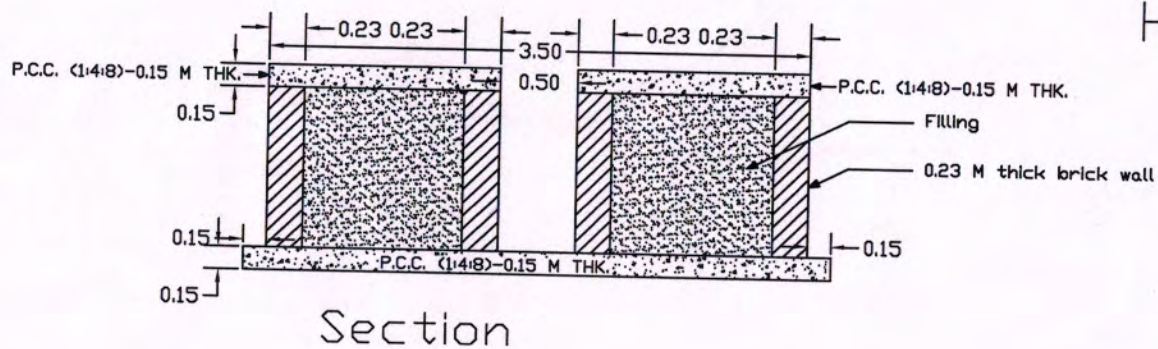


FOUNDATION PLAN

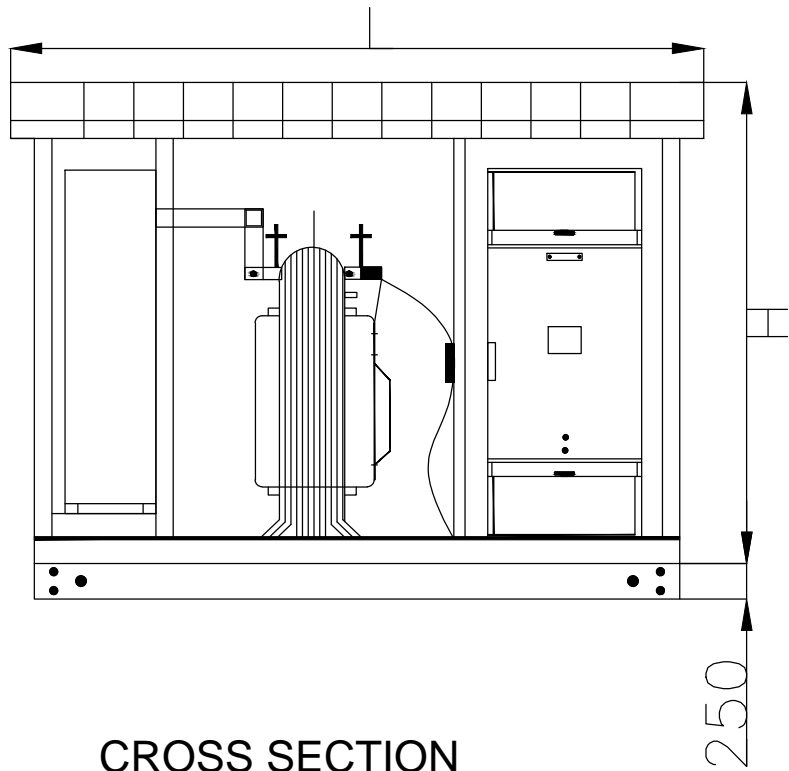
UTTAR GUJARAT VIJ COMPANY LIMITED	
HT Metering Cubicle plinth (HTMC)	
Drg No. UGVCL/R&D-PP/HTMC/PLINTH/001/R1	
Checked by	
Approved by	



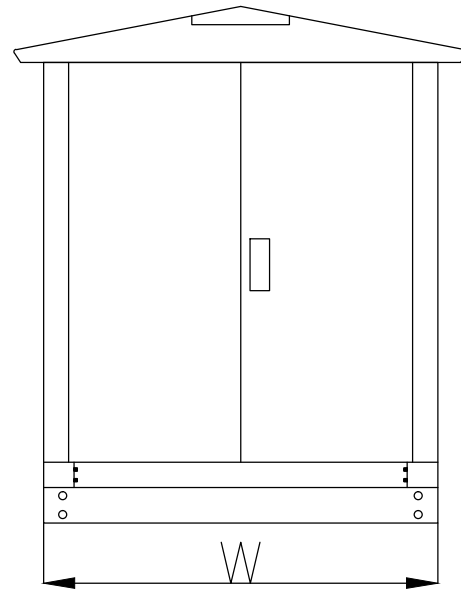
HTMC Plinth



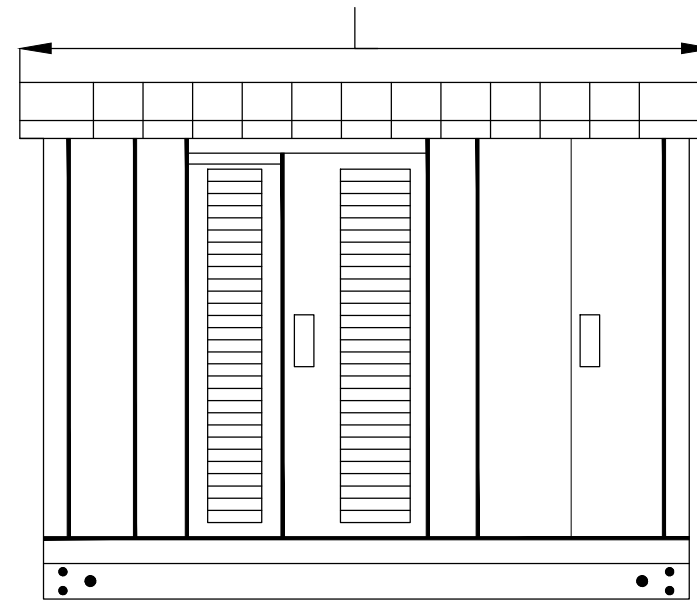
UTTAR GUJARAT VIJ COMPANY LIMITED	
HT Metering Cubicle plinth (HTMC)	
Drg No. UGVCL/R&D-PP/HTMC/PLINTH/001/R1	
Checked by	
Approved by	<i>[Signature]</i> 30/1/15
Page no. 2 of 2	



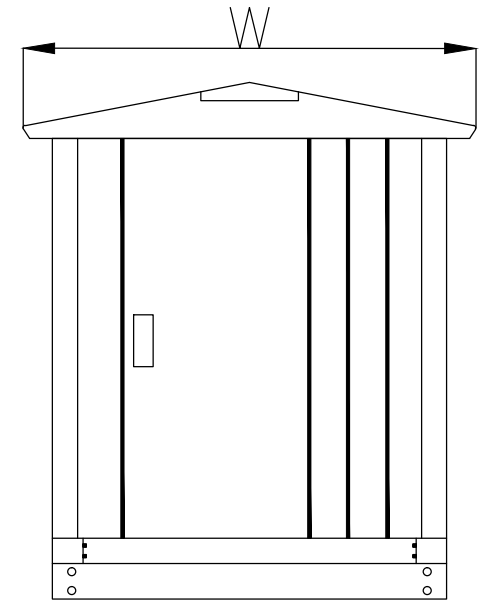
CROSS SECTION
VIEW A-A'



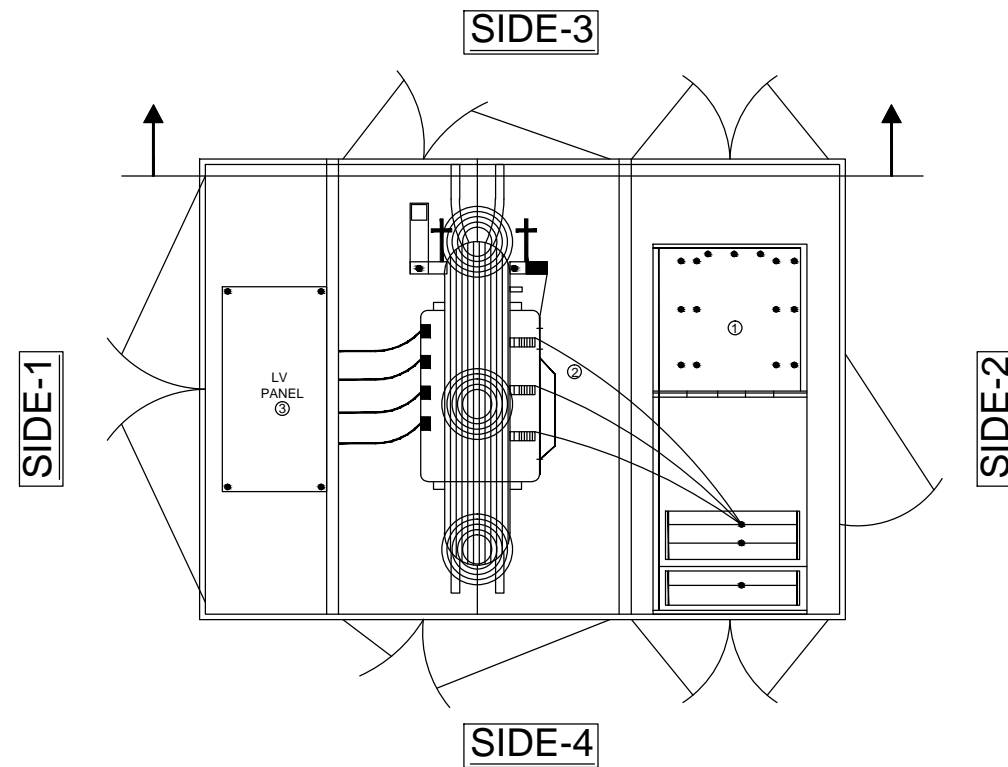
VIEW FROM
SIDE-2



VIEW FROM
SIDE-1



VIEW FROM
SIDE-4



NOTE: -

QUALITY ASSURANCE

The responsibility of control, check and verification of accuracy, correctness, completeness, integration and full compliance of contract provisions in respect of design analysis and drawings rests with the design consultants and the contractor.

By Designer

Sing: <i>Dev</i>	Sing: <i>Pravin</i>	Sing: <i>S. Bhattacharya</i>	Sing: <i>V. K. Dhawan</i>
Date: 02-12-2017	Date: 02-12-2017	Date: 02-12-2017	Date: 02-12-2017
Name: Dev Negi	Name: Gajendra Singh	Name: S. Bhattacharya	Name: V.K. Dhawan
Drawn By	Originator	Checker	Approved By

TECHNICAL CONSULTANTS



VOYANTS SOLUTIONS PVT. LTD.

403, Fourth Floor, BPTP Park Centra,
Sector-30, NH-8, Gurugram-122001
Ph : 0124-4598200, Fax : 0124-4019051
Email- info@voyants.in; www.voyants.in

CLIENT

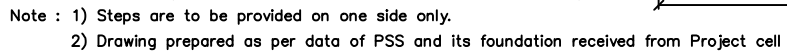
GUJARAT URJA VIKAS NIGAM
LIMITED, GUJARAT (GUVNL)

This document should not be relied on or used in circumstances other than those for which it was originally prepared and for which Voyants Solutions Pvt. Ltd. was commissioned. Voyants Solutions Pvt. Ltd. accepts no responsibility for this document to any other party other than the person by whom it was commissioned.

PROJECT
CONSULTANCY WORK FOR CONVERSION OF EXISTING 22k, 11kV & LT OVERHEAD LINES INTO UNDER GROUND CABLE LINES IN THE DISTRIBUTION SYSTEM INCLUDING SERVICE MAINS TO CONSUMERS, PROTECTION, FEEDER PILLARS & ASSOCIATED TERMINATIONS INCLUDING ANY OTHER ITEMS NECESSARY FOR COMPLETION OF ENTIRE WORK ON TURNKEY BASIS IN THE AGARTALA CITY

DRAWING TITLE	Issue Record	For Reference only
TYPICAL GENERAL ARRANGEMENT DRAWING FOR COMPACT SUB-STATION	FOR TENDER	
	DETAILED ENGINEERING	
	REFERENCE ONLY	✓
DRAWING NUMBER VSPL/GUVNL/TENDER/EL/TYP/02	REV 01	PAPER SIZE A3

PRODUCED BY AN AUTODESK EDUCATIONAL PRODUCT



Approve By:	Approve By:	Project Title	Drawing Title 3-SW PBS PLUMB DRAWING				Client
			Dwg. No.		Sheet		
			01				
			Scale :- 1:2.5				
		UNDERGROUNDING OF HT/LT NETWORK AT BOL GIDC (SANAND-II)	Dn	Dgn	Appd	Date	UGVCL, MEHSANA

PRODUCED BY AN AUTODESK EDUCATIONAL PRODUCT



